



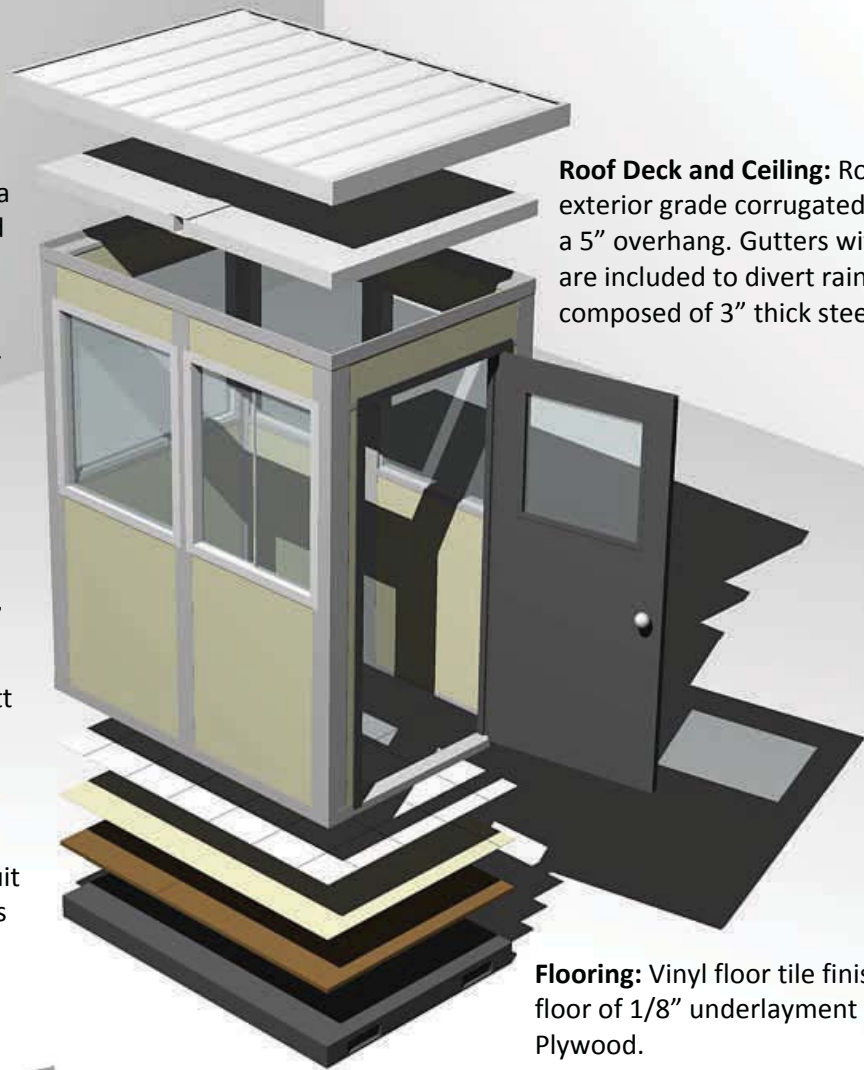
MODULAR OFFICES & ENCLOSURES • PARTITIONS • BOOTHS • MEZZANINES

Wall System: Panels are 3" thick with painted cement board on both sides with a core material of expanded polystyrene. Structural posts are 6063T-5 aluminum extrusions and act as wiring chases for electrical and data cables. All joints and seams are sealed and weather-proofed at the factory

Windows: Glass is 1/4" tempered safety glass and is available in fixed or sliding frames.

Doors: Standard doors are pre-hung 3070 (3' wide x 7' tall) x 1-3/4" thick insulated and composed of painted 20ga. steel. Standard hardware includes stainless steel hinges, sweep, and a key-in-knob lockset.

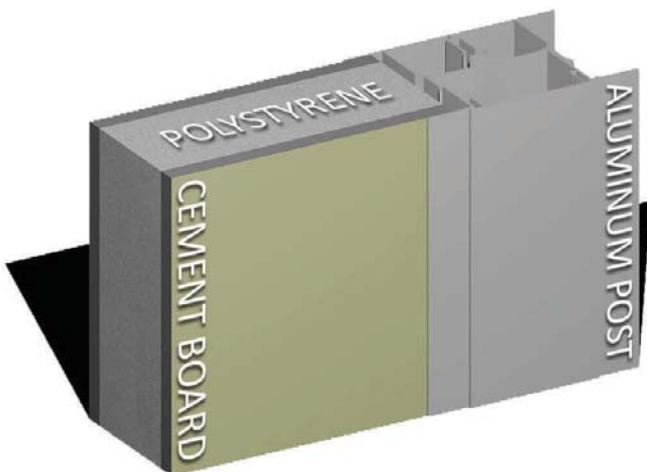
Electrical: Lighting consists of 160Watt surface mounted T-8 fixtures with an acrylic lens. Single pole and 3-way switches, as well as duplex and other outlets are provided in accordance with a standard layout. Standard circuit breaker panels consist of 125A panels with 15A breakers.



Roof Deck and Ceiling: Roof material is exterior grade corrugated decking with a 5" overhang. Gutters with downspouts are included to divert rain. Ceiling is composed of 3" thick steel faced panels.

Flooring: Vinyl floor tile finishes off a sub floor of 1/8" underlayment and 3/4" T&G Plywood.

Base: The base is a painted steel frame with fork pockets for easy unloading and relocating.



Guard Booths ship
FULLY WIRED AND ASSEMBLED.
Simply offload and bring power
to the building!