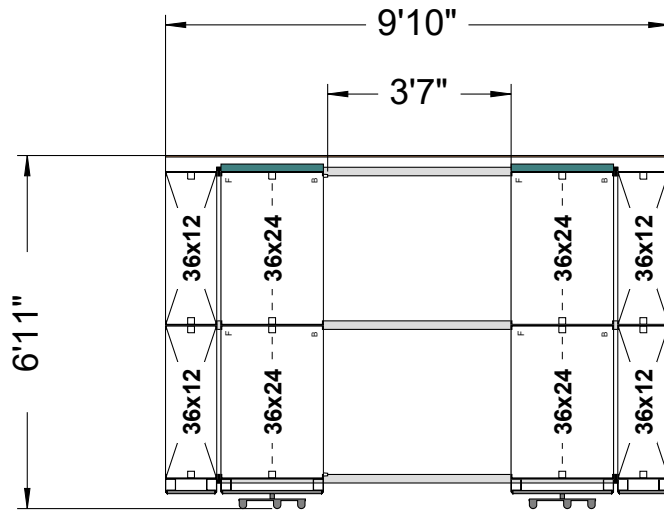


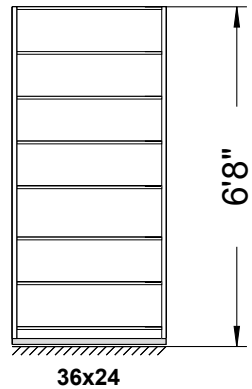
Model # SSG-EML7272L



Plan View

NOTES: System should be installed on solid concrete floor or VCT covered concrete floor. Any existing carpet must be removed prior to installation at the rail locations. Floor levelness should meet standard General Contractor code of 1/8" over 10'.

7 adjustable openings
6 @ 9 3/4" clear
1 @ 11 1/4" clear



Elevation



SOUTHWEST**SOLUTIONS**GROUP

business efficiency systems

www.southwestsolutions.com

1-800-803-1083