

So The Floor Loading Didn't Work!

Now What Are The Alternatives Over Standard File Cabinets

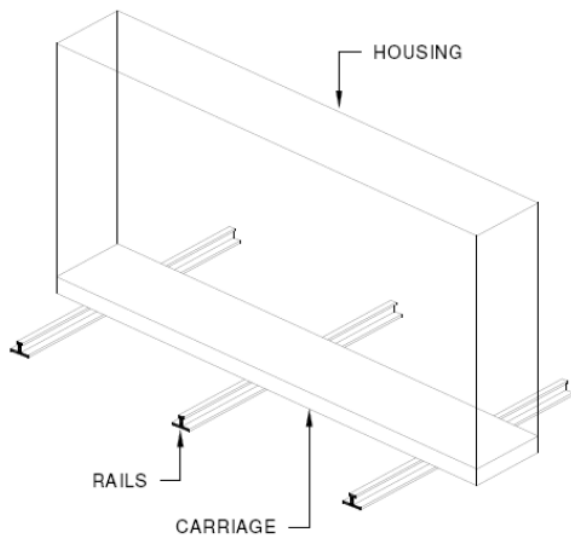


The Spacesaver didn't work with the floor loading issue. So now what do we do? Is the only option the expensive steel floor reinforcement that will force you to modify the building, or expensive lateral filing cabinets that are not space efficient that will not allow you to maximize your space?

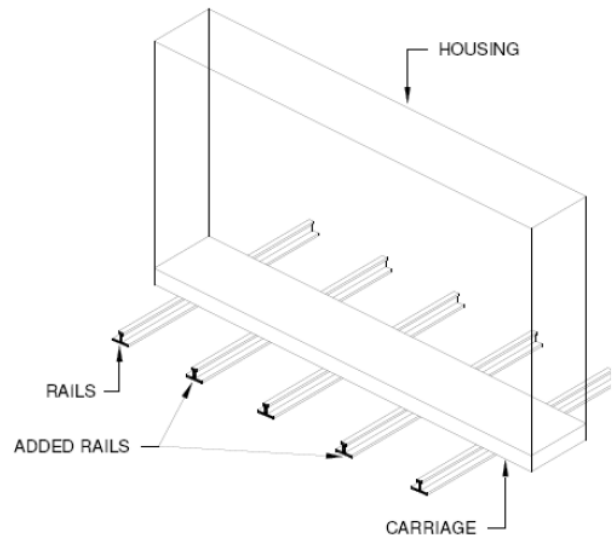
Here are the alternate options:

1. Try the new Spacesaver structural rail system that is less than reinforcing the floor and does not modify the building.

Before – Standard Rail Spacing



After – Added Rails For Floor Loading



2. Non-moving shelving without tracks / rails. Less of an investment than lateral filing cabinets and at least double the capacity.



Conversions from top tab to end tab filing services are available through Southwest Solutions Group.



SOUTHWEST SOLUTIONS GROUP
business organization systems

1-800-803-1083