

1 ASSEMBLE NYLON GLIDE TO SQUARE INSERT FOR EACH LEG. DRIVE SQUARE BUSHING WITH GLIDE INTO BOTTOM OF EACH LEG USING A Mallet OR HAMMER.

2 ASSEMBLE FRONT AND BACK RAIL USING STUD PLATES AND LOCK NUTS PROVIDED. THE 2 X 2 X 1 CHANNEL IS FOR THE FRONT OF THE UNIT AND THE 1 X 8 CHANNEL IS FOR THE REAR THEN ATTACH THE 1/4" - 20 X 3/4" HEX HEAD BOLT AND FLAT WASHER TO THE BOTTOM MOST HOLE IN THE BACK RAIL (BEFORE TIGHTENING NUTS MAKE SURE THAT THE FRONT RAIL AND BACK RAIL ARE FLUSH TO THE TOP OF THE LEG ASSEMBLIES AND PUSHED INWARD APPROXIMATELY 1/8" TO ALLOW THE WORKSURFACE TO BE MOUNTED PROPERLY)
NOTE: HOLES IN RAILS SHOULD BE FACING UP

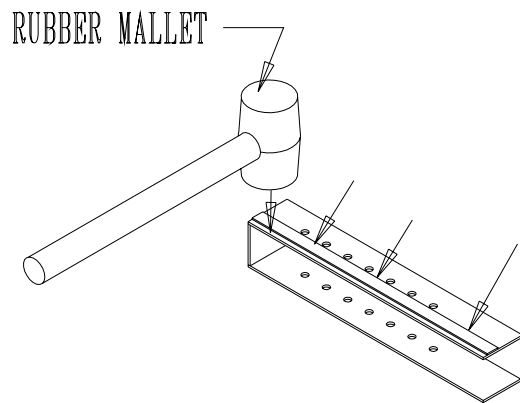
3 PLACE WORKSURFACE BOTTOM UP ON A PROTECTED SURFACE (TO PROTECT LAMINATE FROM SCRATCHES) PLACE ASSEMBLED FRAME ON BACKSIDE OF TOP, LOCATE FLUSH WITH BACK EDGE OF LEG. (SEAM OF EDGING TO BACK). USE #28 DRILL BIT AND PRE-DRILL HOLES 1/2" DEEP AND SCREW #12 X 3/4" SCREWS IN TO SECURE FRAME TO TOP.

NOTE: OVERHANG OF THE TOP SHOULD BE 2 1/2" IN THE FRONT AND THE SIDES (FLUSH WITH BACK)

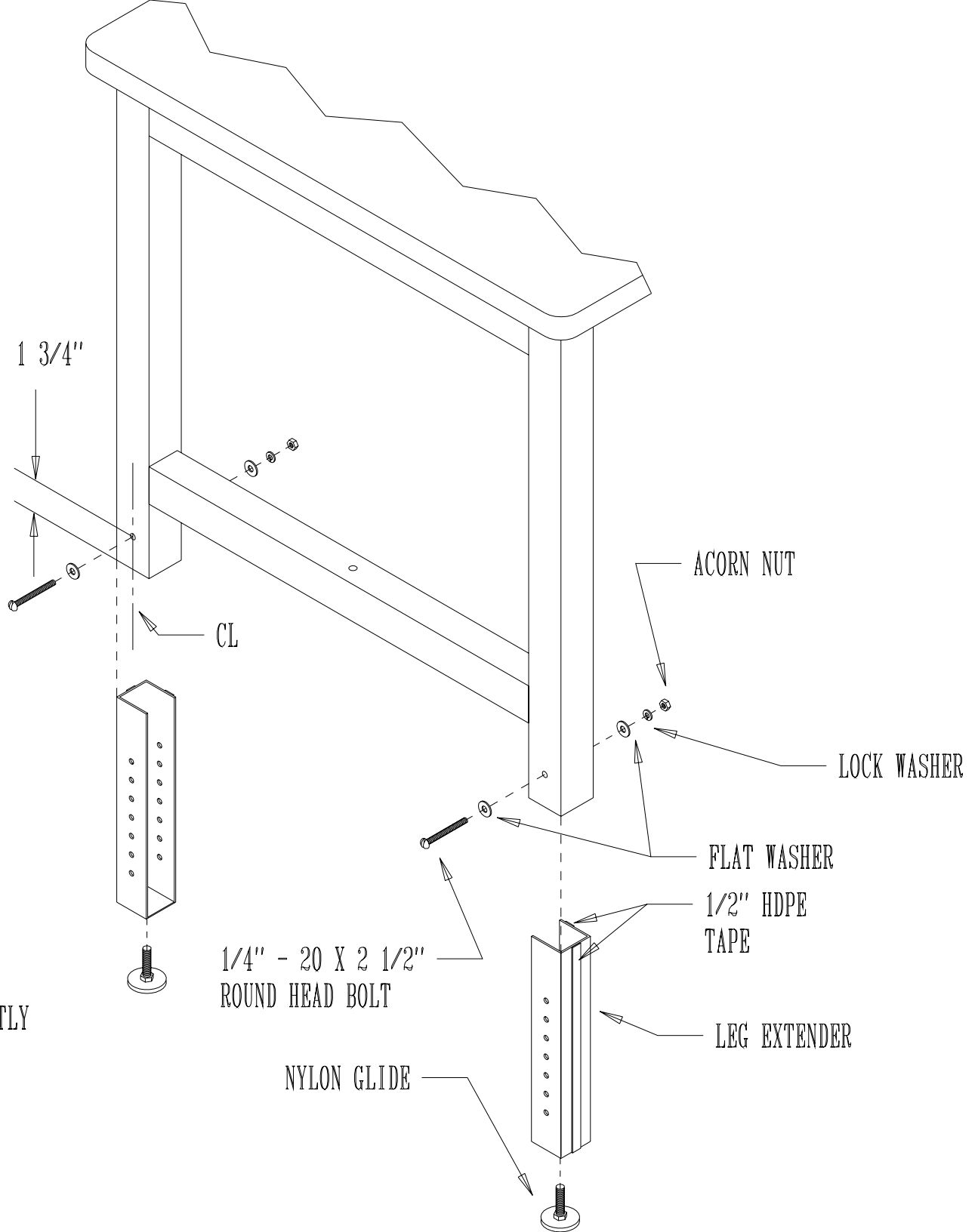
WHEN ASSEMBLING A QUANTITY OF BENCHES AN ELECTRIC SCREW GUN IS RECOMMENDED.

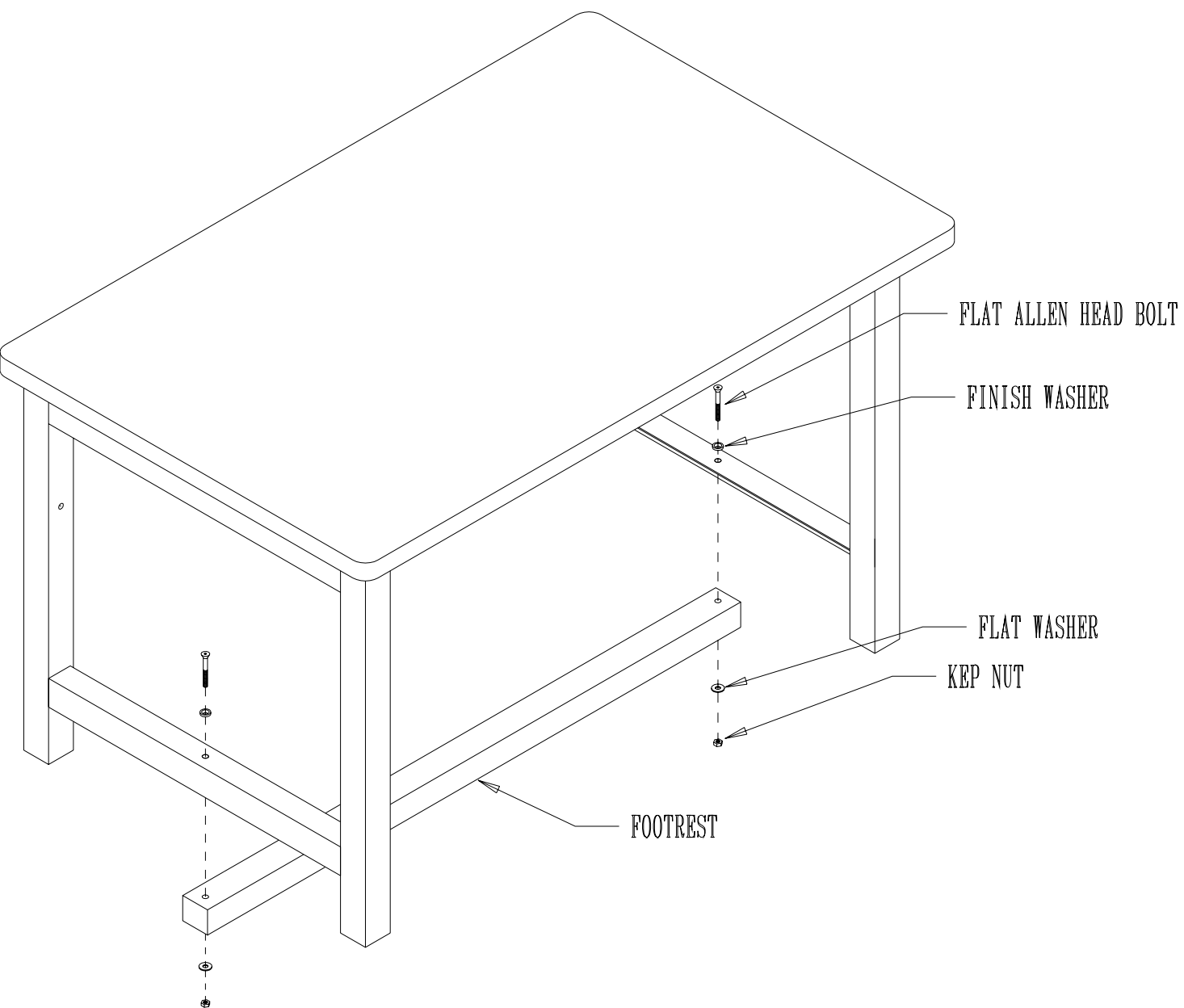
4 SET BENCH UPRIGHT AND ADJUST NYLON GLIDES TO LEVEL

- 1) IF NOT ALREADY PREDRILLED; DRILL A 5/16" HOLE THRU THE LEG AT THE DIMENSIONS SPECIFIED IN THE DRAWING.
- 2) SLEEVE LEG EXTENDER INTO LEG AT DESIRED HEIGHT AND PLACE BOLT BOLT ASSEMBLY AS SHOWN AND TIGHTEN.
- 3) SCREW NYLON GLIDES INTO LEG EXTENDERS

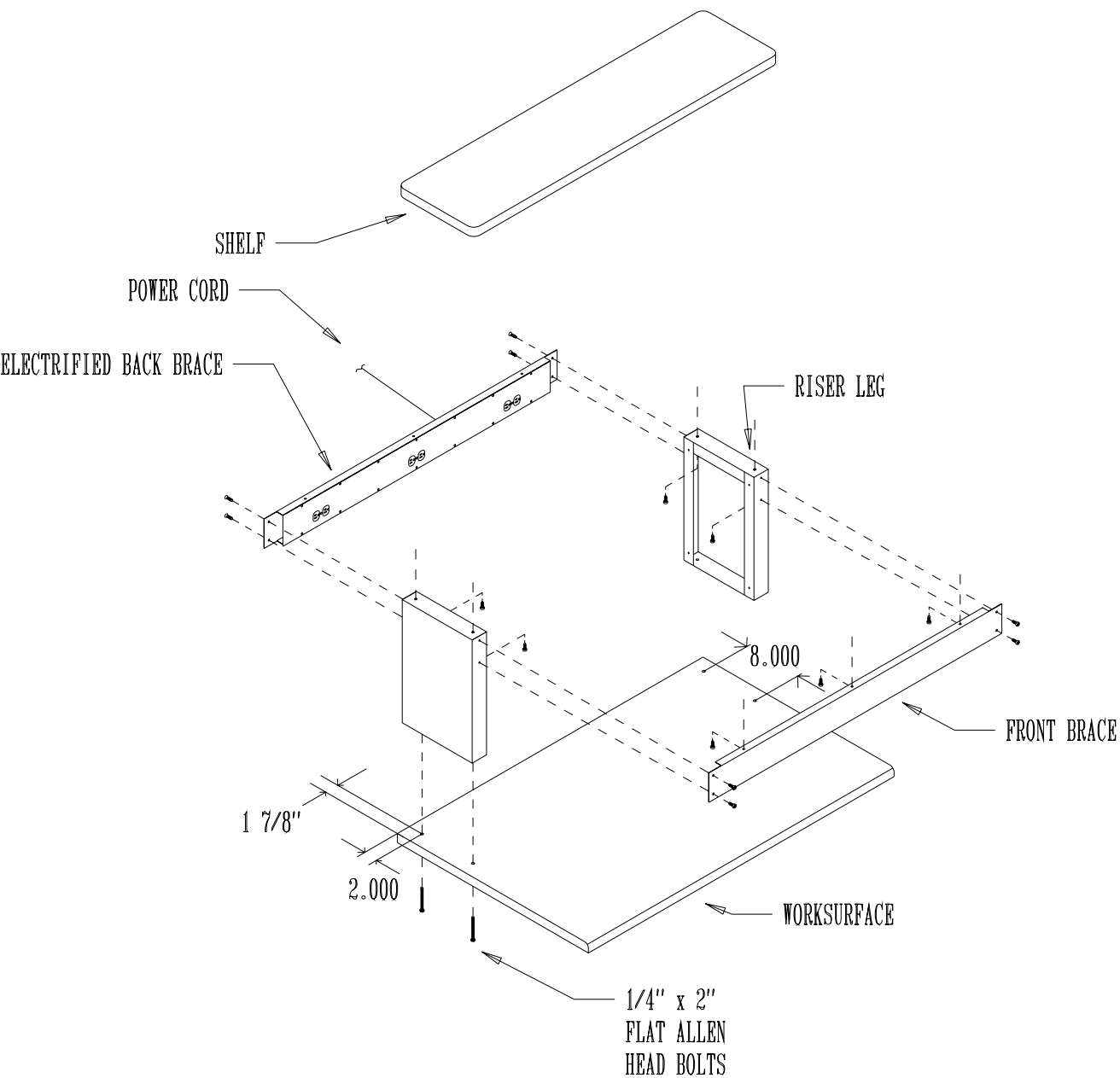


NOTE: IF THE LEG EXTENDERS ARE FITTING TIGHTLY AND ARE NOT SLIDING EASILY INTO THE LEGS, REMOVE EXTENDER AND WITH A RUBBER Mallet HIT ALONG BOTH SIDES OF THE EXTENDER TO SLIGHTLY BEND THE CHANNEL INWARDS.





1) ASSEMBLE FOOTREST AS SHOWN USING
1/4" - 20 X 2 1/4" FLAT ALLEN HEAD BOLT,
FINISH WASHER, FLAT WASHER AND KEP
NUTS PROVIDED .



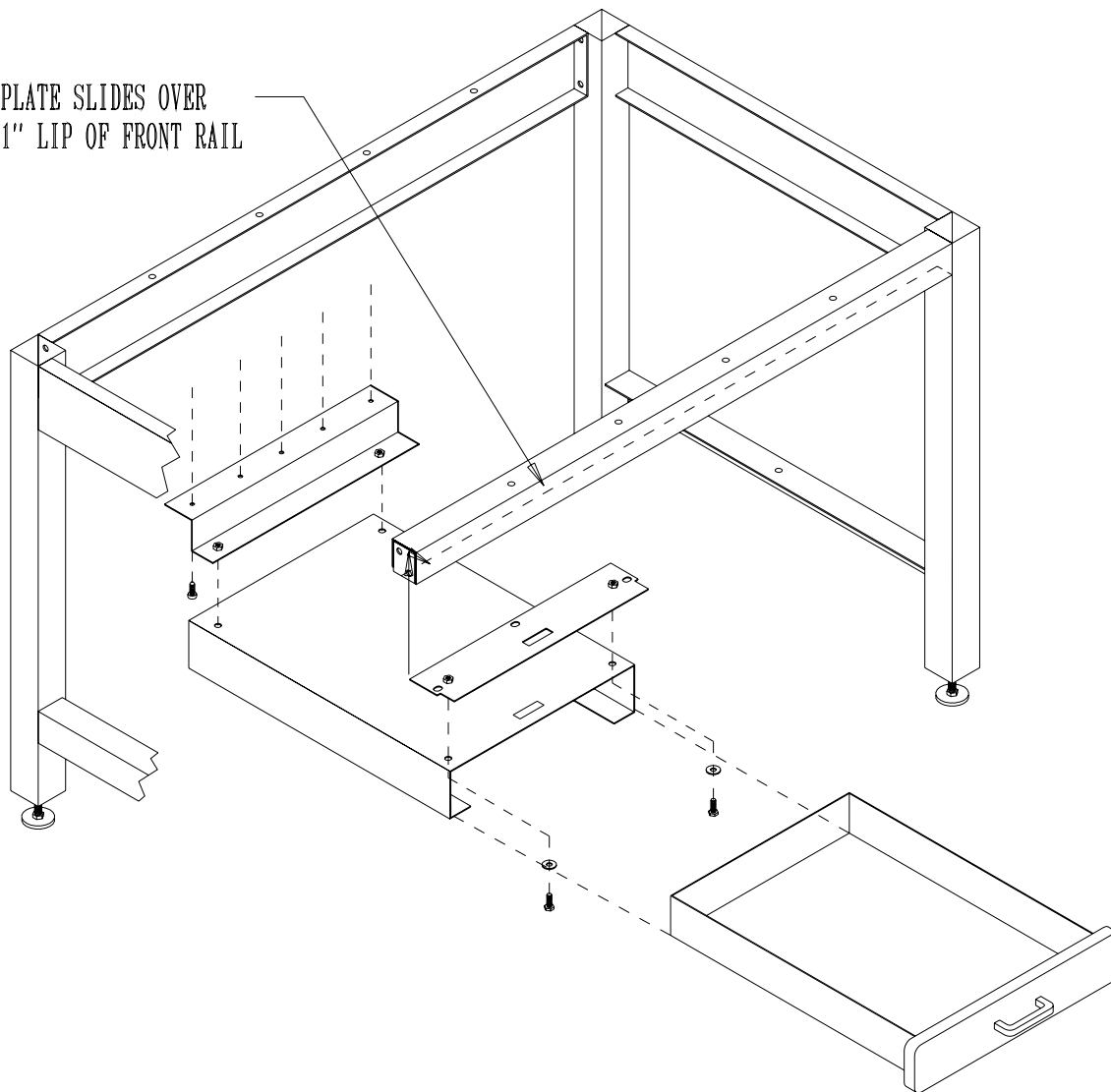
1) IF WORKSURFACE IS NOT ALREADY PREDRILLED, DRILL THE WORKSURFACE WITH 3/8" DIA. DRILL BIT PER DIMENSIONS ON DRAWING.

1A) IF YOU HAVE PURCHASED OUR OPTIONAL PANEL COVERS PLEASE REFER TO DRAWING #A7318 (S-2EP ELECTRICAL PANEL) OR DRAWING #A7319 (S-2 ENCLOSURE PANEL) BEFORE CONTINUING TO STEP 2

2) MOUNT THE ELECTRICAL BACK BRACE AND FRONT BRACE TO RISER LEGS USING 1/4" - 20 X 3/4" TRUSS HEAD BOLT.

3) MOUNT SHELF EVENLY ON RISER ASSEMBLY (FRONT BRACE AND RISER LEGS) USING #12 X 3/4" PHILLIPS PAN HEAD SCREWS (MAKE SURE THAT THE "SEAM OF THE "T" MOLD EDGE IS FACING THE REAR OF THE STATION AND THAT THERE IS EQUAL OVERHANG ON EITHER SIDE AND 1/2" OVERHANG IN THE BACK.

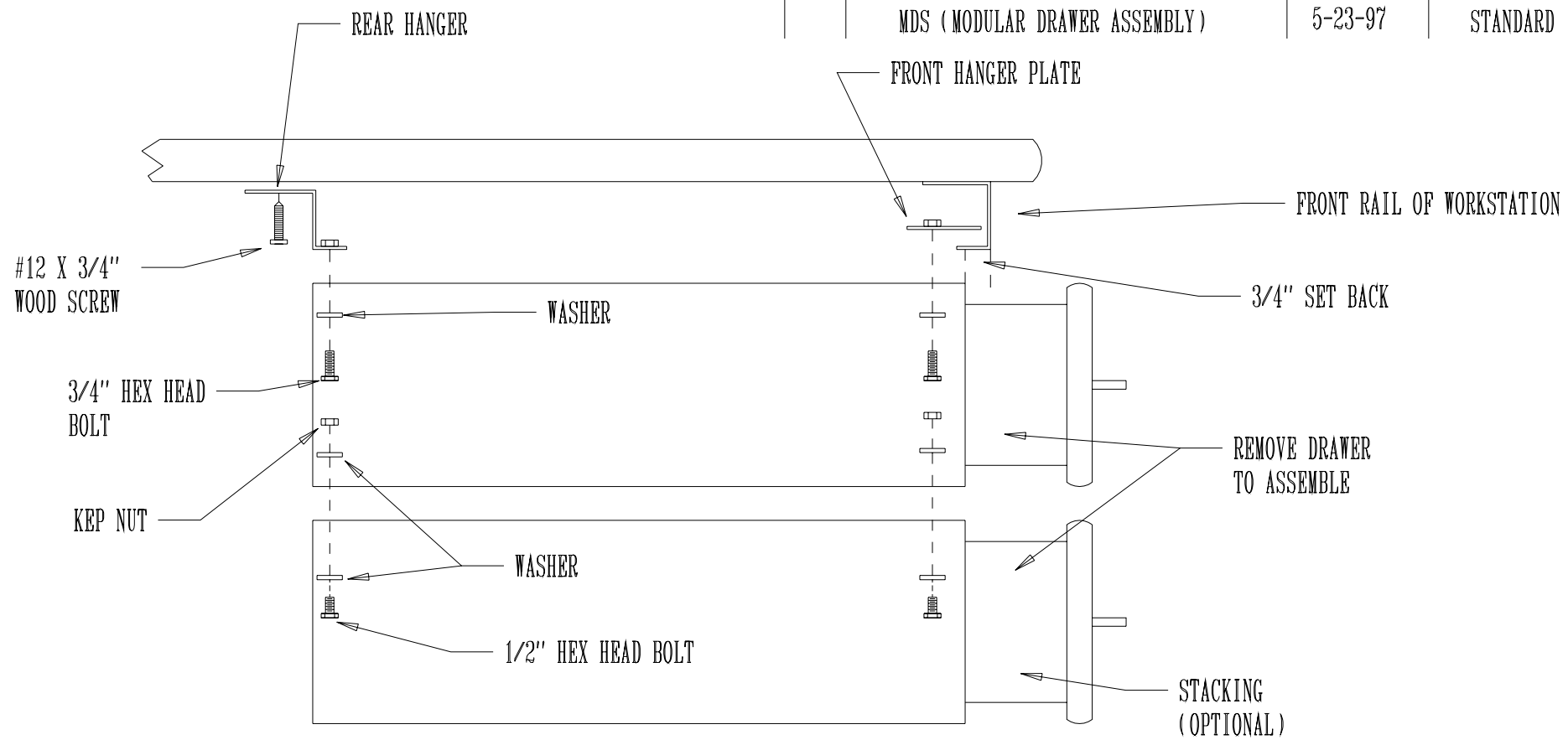
4) MOUNT RISER LEG ASSEMBLY TO THE WORKSURFACE WITH 1/4" X 2" FLAT ALLEN HEAD BOLTS PROVIDED.

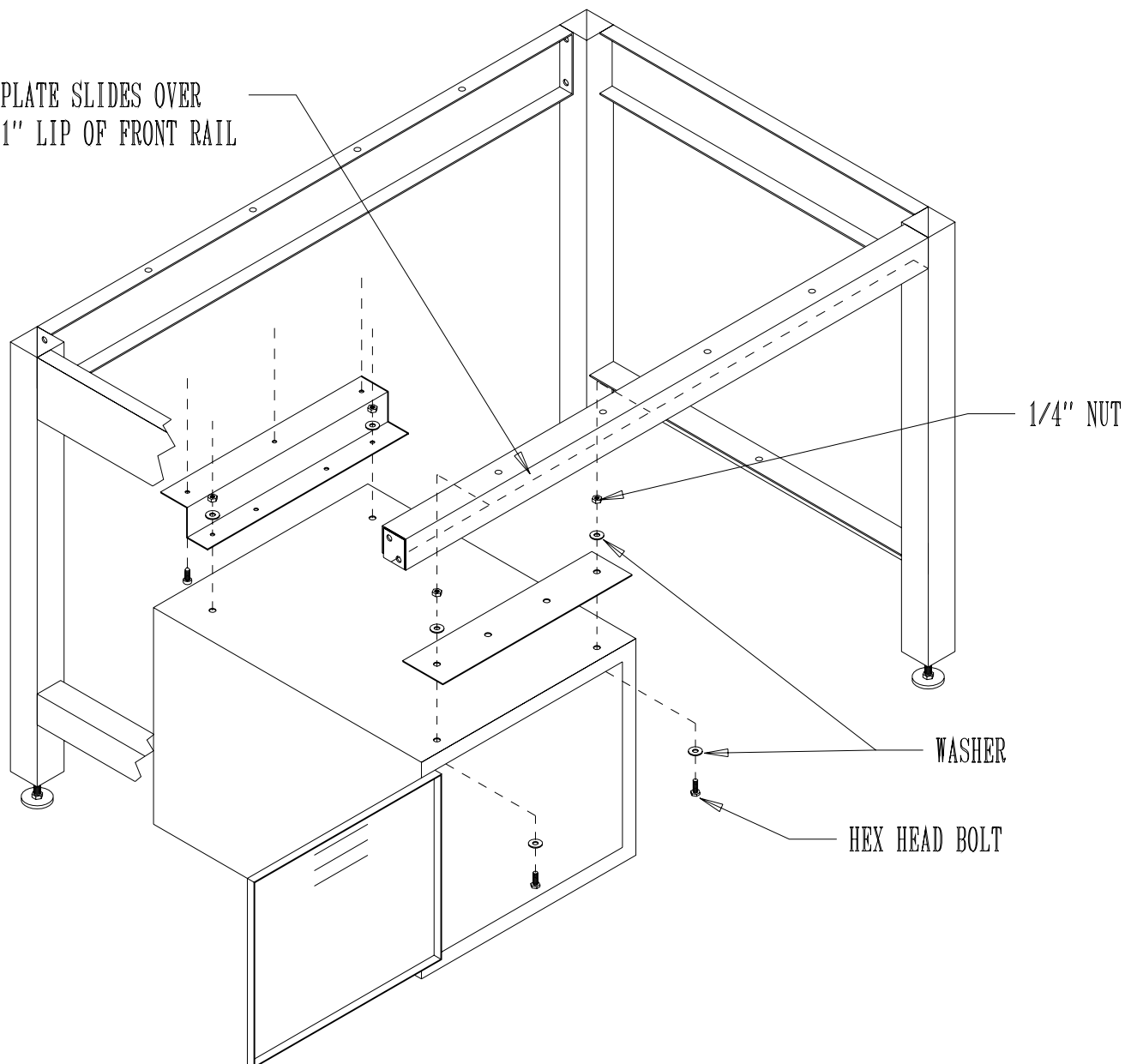


- 1) REMOVE DRAWER FROM HOUSING
- 2) MOUNT BRACKETS TO DRAWER USING
1/4" X 3/4" HEX HEAD BOLTS AND WASHERS
AS SHOWN
(TIGHTEN BOLTS ON REAR BRACKET BUT LEAVE BOLTS ON FRONT PLATE LOOSE)
- 3) SLIDE HOUSING OVER FRONT RAIL OF
BENCH SANDWICHING FRONT RAIL BETWEEN
HOUSING AND PLATE
- 4) SET DRAWER HOUSING A MINIMUM OF 1"
AWAY FROM LEG AND 3/4" SET BACK
FROM FRONT RAIL
- 5) INSTALL FIVE (5) #12 PHILLIPS PAN HEAD
SCREWS THROUGH REAR BRACKET AND
INTO BOTTOM OF THE WORKSURFACE.
TIGHTEN THE BOLTS SECURING THE FRONT
HANGING PLATE

**** NOTE **** DRAWERS ARE MORE EASILY
MOUNTED WHEN BENCH IS FLIPPED UPSIDE DOWN

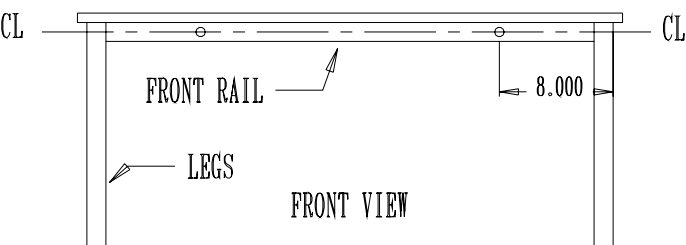
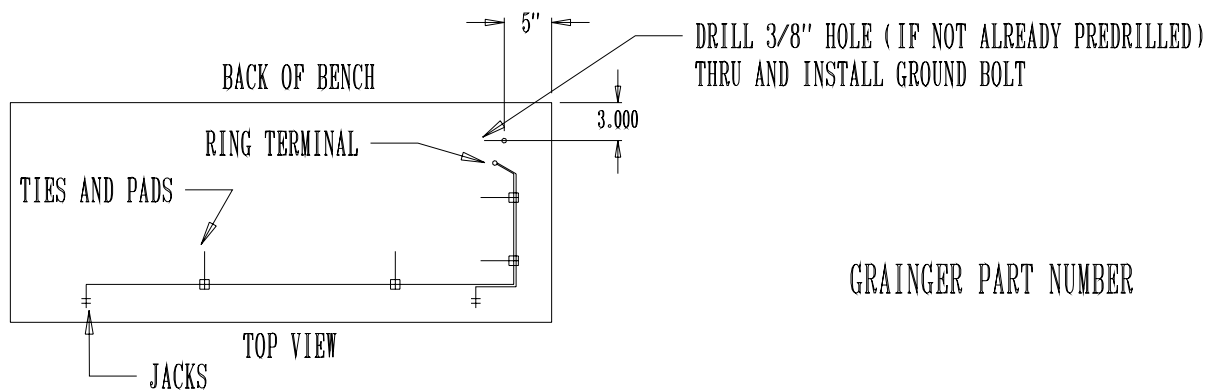
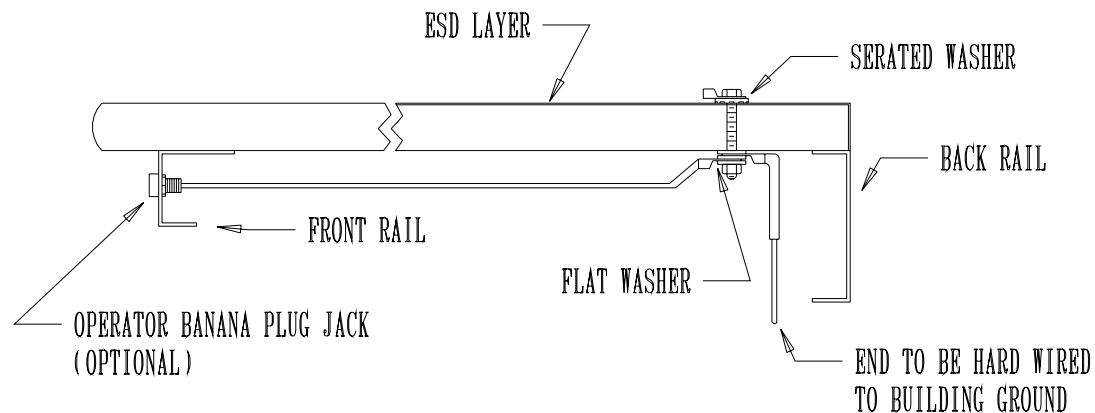
REVISIONS			
REV	DESCRIPTION	DATE	APPROVED
	MDS (MODULAR DRAWER ASSEMBLY)	5-23-97	STANDARD





- 1) MOUNT BRACKETS AS SHOWN TO THE PADLOCK DRAWER USING 1/4" HEX HEAD BOLTS, NUTS AND WASHERS (TIGHTEN BOLTS ON REAR BRACKET BUT LEAVE BOLTS ON FRONT PLATE LOOSE)
- 2) SLIDE PADLOCK DRAWER OVER FRONT RAIL OF BENCH SANDWICHING FRONT RAIL BETWEEN PADLOCK DRAWER AND PLATE
- 3) SET THE PADLOCK DRAWER AS CLOSE TO THE LEFT LEG AS POSSIBLE AND FLUSH WITH THE FRONT RAIL
- 4) INSTALL #12 PHILLIPS PAN HEAD SCREWS THROUGH REAR BRACKET AND INTO BOTTOM OF THE WORKSURFACE. TIGHTEN THE BOLTS SECURING THE FRONT HANGING PLATE

**** NOTE **** PADLOCK DRAWERS ARE MORE EASILY MOUNTED WHEN BENCH IS FLIPPED UPSIDE DOWN



- 1) DRILL 3/8" HOLE IN WORKSURFACE PER MEASUREMENTS IN THE TOP VIEW (IF NOT ALREADY PREDRILLED)
- 2) INSTALL 5/16" X 2 1/2" HEX HEAD BOLT, RING TERMINAL, AND SERATED WASHER THROUGH WORKSURFACE. ON UNDERSIDE OF WORKSURFACE INSTALL WASHER, RING TERMINAL, WASHER, RING TERMINAL, WASHER, AND NUT IN THIS ORDER AND TIGHTEN
- 3) MEASURING APPROX. 8" IN FROM OUTSIDE OF OF LEG AND 1" DOWN FROM TOP OF WORSURFACE (SEE FRONT VIEW) DRILL FRONT RAIL WITH 5/16" DIA. DRILL BIT
- 4) MOUNT JACKS INTO FRONT RAIL USING NUTS PROVIDED
- 5) RUN WIRES IN MANNER SHOWN IN TOP VIEW USING WIRE TIES AND SELF STICK PADS (4 TO 6 PER BENCH) NOTE : PADS STICK BETTER TO METAL SURFACES
- 6) CUT WIRES TO APPROPRIATE LENGTH BY PULLING WIRES (TO REMOVE EXCESS SLACK) TOWARDS THE HOLE IN THE WORKSURFACE AND ADDING 1" TO THAT. STRIP WIRES BACK 1/4" AND INSTALL THE RING TERMINAL BY CRIMPING IT TO BOTH EXPOSED WIRES AT THE SAME TIME

- 1) MOUNT 1/4" X 2 3/4" HEX HEAD BOLTS THROUGH REAR LEGS AS SHOWN
- 2) TURN 1/4" STRUT NUTS ON APPROXIMATELY TWO (2) THREADS
- 3) HOLD THE HEAVY DUTY UPRIGHTS AGAINST BACK OF REAR LEGS
- 4) PUSH BOLT ASSEMBLY INTO UPRIGHTS AND TURN CLOCKWISE TO TIGHTEN

12" OF THE HEAVY DUTY UPRIGHT MUST BE LOCATED BELOW THE TOP OF THE WORKSURFACE FOR STABILITY AND SAFETY

END CAP

WORKSURFACE MUST BE FLUSH WITH BACK OF LEGS BEFORE MOUNTING UPRIGHTS

1/4" - 20
STRUT NUTS

TOP SHOWN TRANSPARENT FOR CLARITY

HOLES PREDRILLED AT FACTORY

1/4" FLAT WASHER

1/4" - 20 X 2 3/4"
HEX HEAD BOLT
(7/16" WRENCH)

