

Cell Phone Lockers - SMS-135-19100 Series

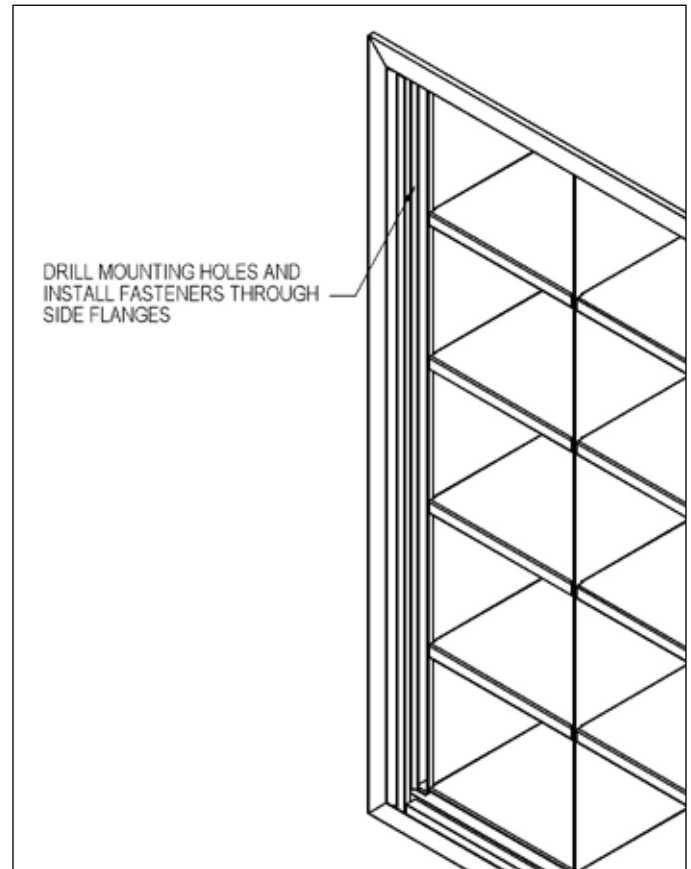
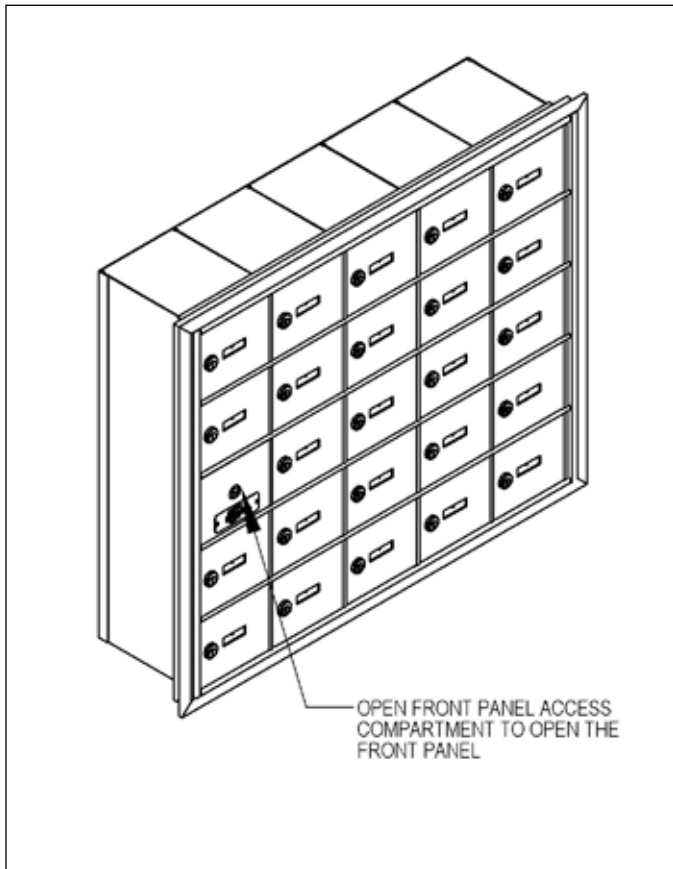
Recessed Mounted with Front Access Panel

Installation Instructions

The recessed mounted cell phone locker must be securely supported by a frame constructed of 2"x4" or 2"x6" lumber. Construct support framing as shown on page 8 of these instructions. Cut a hole in the wall according to the Rough Opening Dimensions calculated on page 5.

Installation Instructions

Place the unit in the rough opening. Open the front panel access compartment of the cell phone locker then open the front panel. Fasten the unit (hardware not provided) to the support framing. Close the front panel then the front panel access compartment.



Notes

1. Wall opening and lumber frame must be square.
2. Do not deform, force, or twist the locker frame to fit an incorrect rough opening or fit against an irregular surface.

Cell Phone Lockers - SMS-135-19100 Series

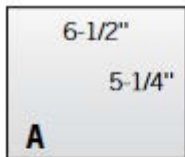
Recessed Mounted Installation Instructions

Overall Dimensions and Rough Opening Dimensions

Overall Dimensions – 8" Deep Compartments

7 Doors High		Width	Height	Depth
SMS-135-19178-14	2 "A" Doors Wide	16-1/4"	40-3/4"	9"
SMS-135-19178-21	3 "A" Doors Wide	22-3/4"	40-3/4"	9"
SMS-135-19178-24	4 "A" Doors Wide	29-1/4"	40-3/4"	9"
SMS-135-19178-35	5 "A" Doors Wide	35-3/4"	40-3/4"	9"

5 Doors High		Width	Height	Depth
SMS-135-19158-15	3 "A" Doors Wide	22-3/4"	29-3/4"	9"
SMS-135-19158-16	4 "A" Doors Wide	29-1/4"	29-3/4"	9"
SMS-135-19158-20	4 "A" Doors Wide	29-1/4"	29-3/4"	9"
SMS-135-19158-25	5 "A" Doors Wide	35-3/4"	29-3/4"	9"



"A" door



"B" door

Calculation of Overall Dimensions of Multiple Units

Width and height of outside trim frame of each unit:

Overall Width = No. of doors wide times 6-1/2" plus 3-1/4"

Note - "B" door count as 2 "A" doors wide

Overall Height = No. of doors high times 5-1/2" plus 2-1/4"

Calculation of Rough Opening Dimensions

Width of Rough Opening = Overall Width less 1"

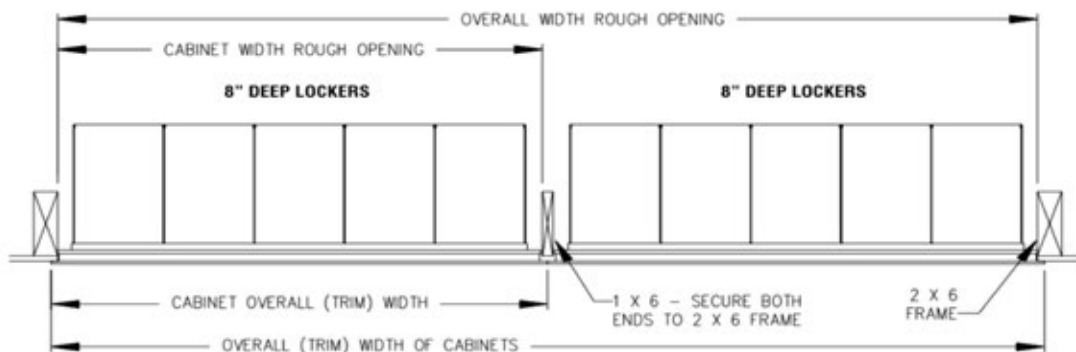
(For multiple units = Sum of Overall Widths less 1")

Height of Rough Opening = Overall Height less 1"

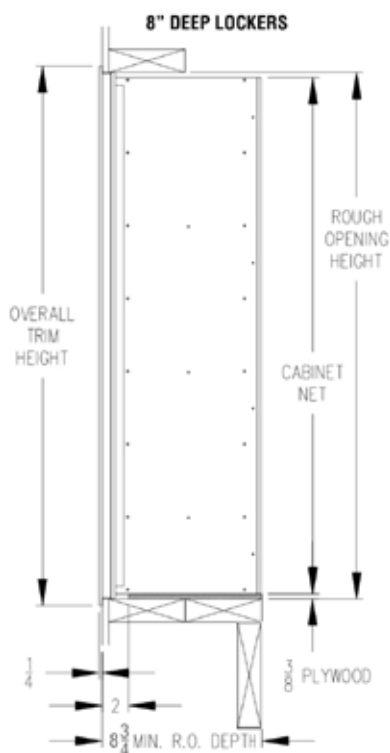
Cell Phone Lockers - SMS-135-19100 Series

Recessed Mounted Installation Instructions

Top View of Cell Phone Lockers in Wall



Side View of Cell Phone Lockers in Wall



Cell Phone Lockers - SMS-135-19100 Series

Identification Window Installation Instructions

Installation of Identification Window

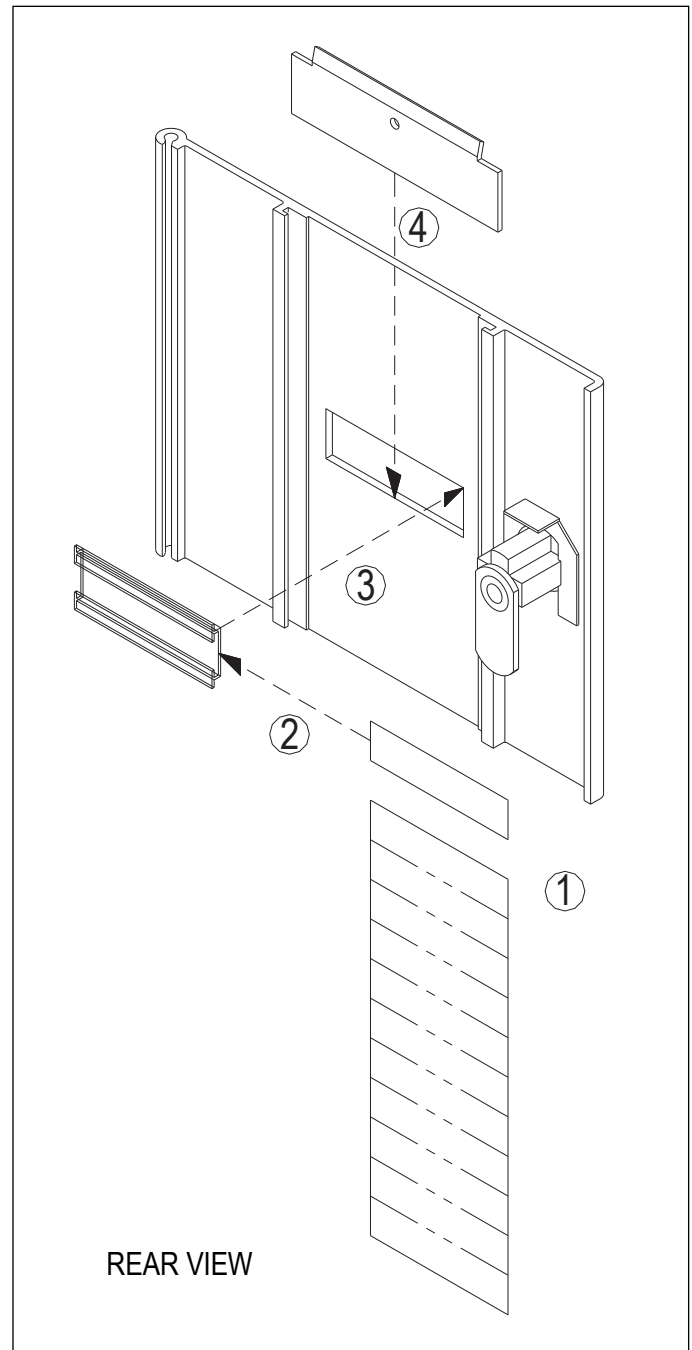
Identification labels, clear plastic windows, and metal window backup plates are provided, separately bagged, for use in marking the user's identity on each locker door. The steps below are numbered according to the picture to the right.

1. Mark the user's name or other appropriate identity on one of the ½" x 2" labels provided. Tear the label from the card.

2. Insert the label into the clear plastic window so that the marking will be visible from the front of the locker door.

3. Place the clear plastic window into the rectangular hole in the door so that the identity is visible from the front of the door.

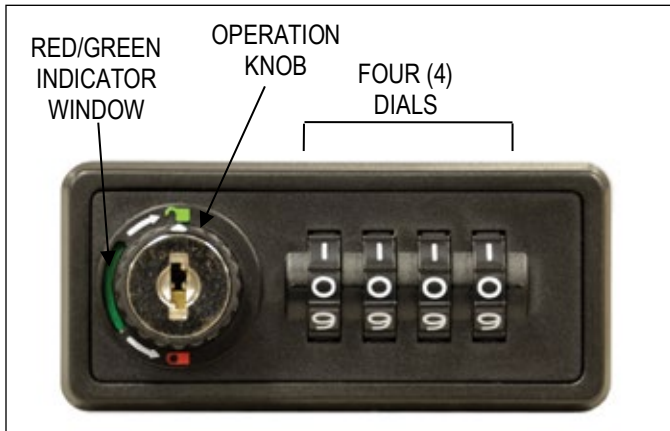
4. Slide metal window backup plate down into grooves at top of door. Slide plate down until it covers the plastic window and the bent lip of the plate rests on the top edge of the plastic window.



Cell Phone Lockers - SMS-135-19100 Series

Resettable Combination Lock Operating & Resetting Instructions

The resettable combination lock is a durable and easy-to-use lock providing resettable combination access without the need for keys. **Please read this entire page before use.**



The lock has a four (4) digit combination setting. When the lock is locked (closed), a red indicator appears in a window next to the operation knob. When the lock is unlocked (open), a green indicator appears in the window.

There are two (2) modes of operation: fixed combination or resettable combination. In fixed combination mode, the lock is continually opened and closed with the same custom combination that was set. In the resettable combination mode, the combination may be changed after each time the lock is opened.

The factory preset combination is 0000. Master key operation may be used at any time to open a lock.

Setup for a Fixed Combination

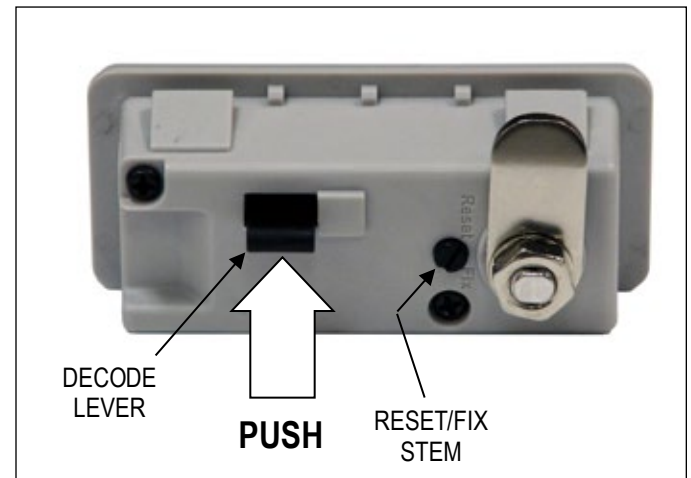
1. If locked, turn the four (4) dials to the factory preset combination (0000) or the known combination that unlocks the lock.
2. Turn the operation knob clockwise 180° to the open position. The indicator in the window will turn from red to green.
3. Turn the reset/fix stem on the back of the lock from the "Fix" to the "Reset" position.
4. Returning to the front of the lock, set the desired custom fixed combination on the four (4) dials.
5. On the back of the lock, return the reset/fix button back to "Fix".

The lock is now set to continuously open using the custom fixed combination. After locking, scrambling the four (4) dials will secure the contents.

Setup for a Resettable Combination

1. If locked, turn the four (4) dials to the factory preset combination (0000) or the known combination that unlocks the lock.
2. Turn the operation knob clockwise 180° to the open position. The indicator in the window will turn from red to green.
3. Turn the reset/fix stem on the back of the lock from the "Fix" to the "Reset" position. Leave the button in this position.
4. Close the door. Do not lock it.

The lock combination can now be resettable by the user setting their own desired combination before turning the operation knob to the locked position (red window indicator). After locking, scrambling the four (4) dials will secure the contents.



Decode Operation

Used to determine lock combination.

1. Open the door. Use the master key if necessary.
2. Push the decode lever up and hold it in place. Rotate each of the dials on the front of the lock until it stops or there is a "click" sound. Release the decode lever.
3. Each dial will now be in the "open" combination position.