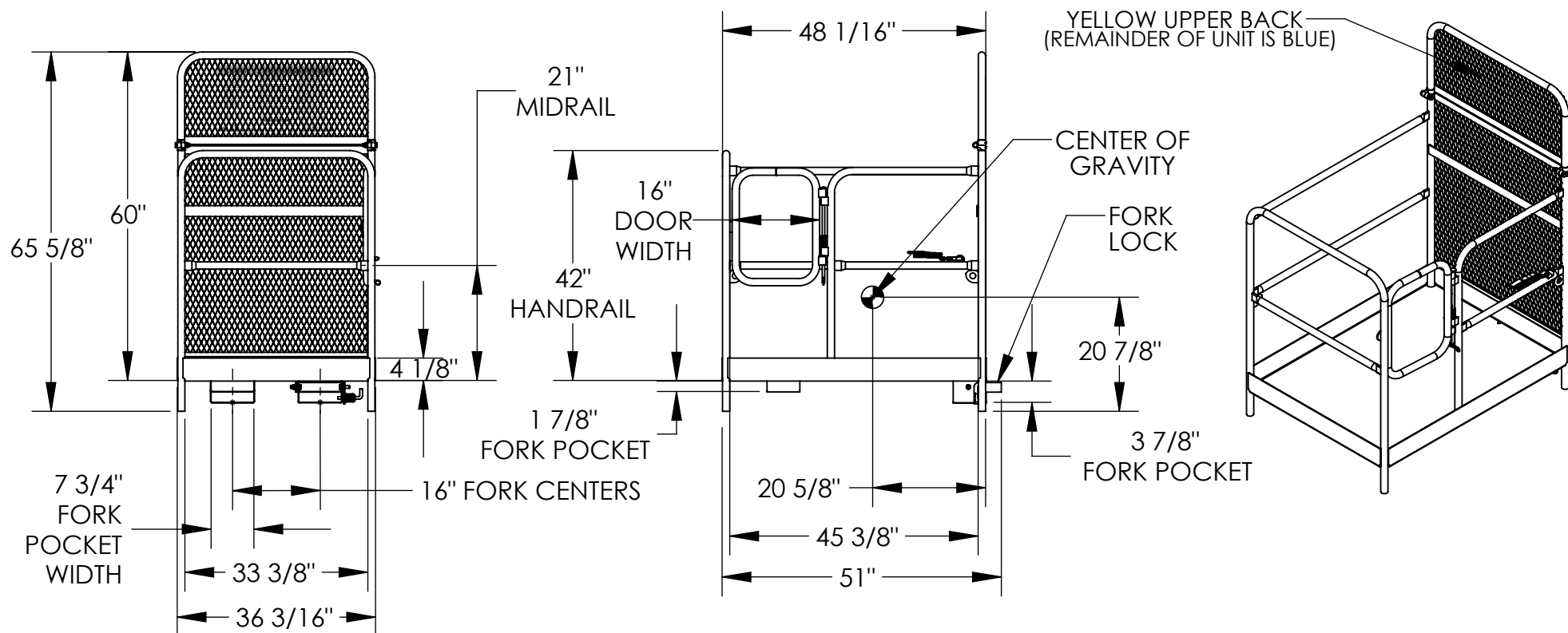


WORK PLATFORM- SMS-46A-HWP-3648



STANDARD FEATURES

MODEL NUMBER IS SMS-46A-HWP-3648
 CAPACITY IS 1,000 LBS. (EVENLY DISTRIBUTED LOAD)
 OVERALL WIDTH IS $36 \frac{3}{16}"$
 USABLE WIDTH IS $33 \frac{3}{8}"$
 OVERALL LENGTH IS $51"$
 USABLE LENGTH IS $45 \frac{3}{8}"$
 42" HIGH HANDRAIL WITH 21" MIDRAIL AND $4 \frac{1}{8}"$ TOEBOARD
 SELF-CLOSING DOOR SWINGS IN ONLY (WILL NOT OPEN OUT)
 FORK LOCK IS ROTATED UP BEHIND BACK OF FORK
 AND LOCKED WITH SPRING LOADED PLUNGER
 36" LONG STRAP WITH HOOK (NOT SHOWN) MUST ATTACH
 PLATFORM TO FORK TRUCK
 60" HIGH EXPANDED MESH BACKING
 USABLE FORK POCKET HEIGHTS: $3 \frac{7}{8}"$ REAR, $1 \frac{7}{8}"$ FRONT
 USABLE FORK POCKET WIDTH: $7 \frac{3}{4}"$
 MANUFACTURED TO MEET OUR INTERPRETATION OF OSHA STANDARDS
 TOUGH BAKED IN POWDER COATED ERGO BLUE FINISH FRAME AND
 YELLOW UPPER BACK

NEVER EXCEED LOAD CENTER RATING
 PER FORK TRUCK MANUFACTURER'S GUIDELINES.
 DO NOT USE THIS FORK TRUCK ATTACHMENT IF LOAD WILL
 EXCEED FORK TRUCK MANUFACTURER'S LOAD CENTER RATING.