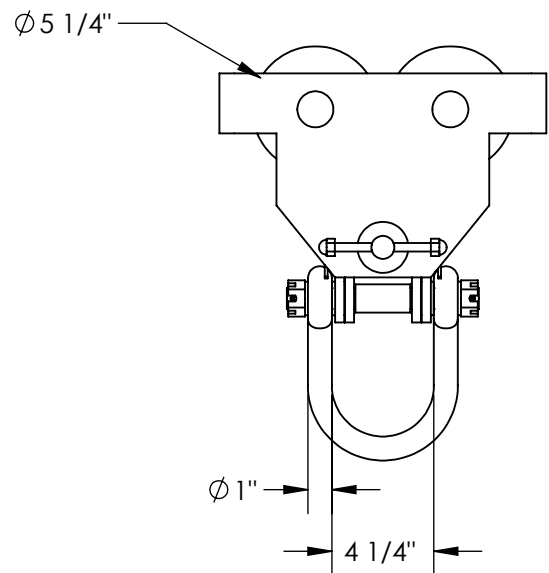
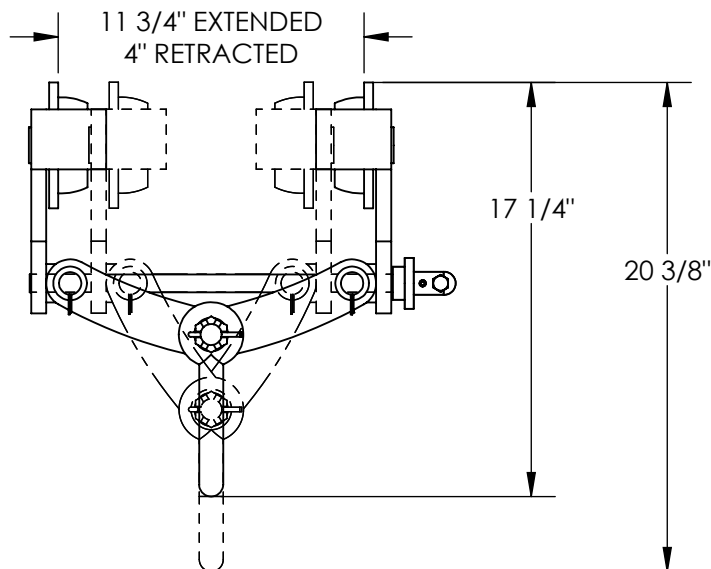
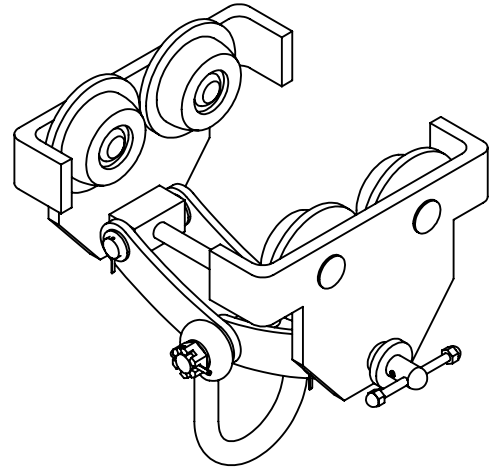
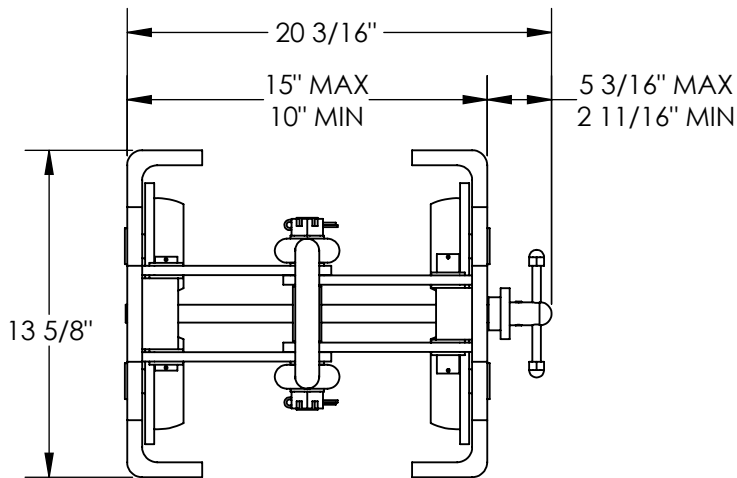


QUICK INSTALL MANUAL TROLLEY

SMS-46A-HQIT-10



STANDARD FEATURES

MODEL NUMBER IS SMS-46A-HQIT-10
 FITS BEAM FLANGE WIDTH OF 4" TO 11 3/4"
 HEADROOM IS 13 7/8"
 OVERALL WIDTH IS 20 3/16"
 OVERALL LENGTH IS 13 5/8"
 OVERALL HEIGHT IS 20 3/8" MAX AND 17 1/4" MIN
 UNIFORM CAPACITY LOAD IS 10,000 LBS
 STEEL CONSTRUCTION WITH PAINTED FINISH
 4 1/4" SHACKLE