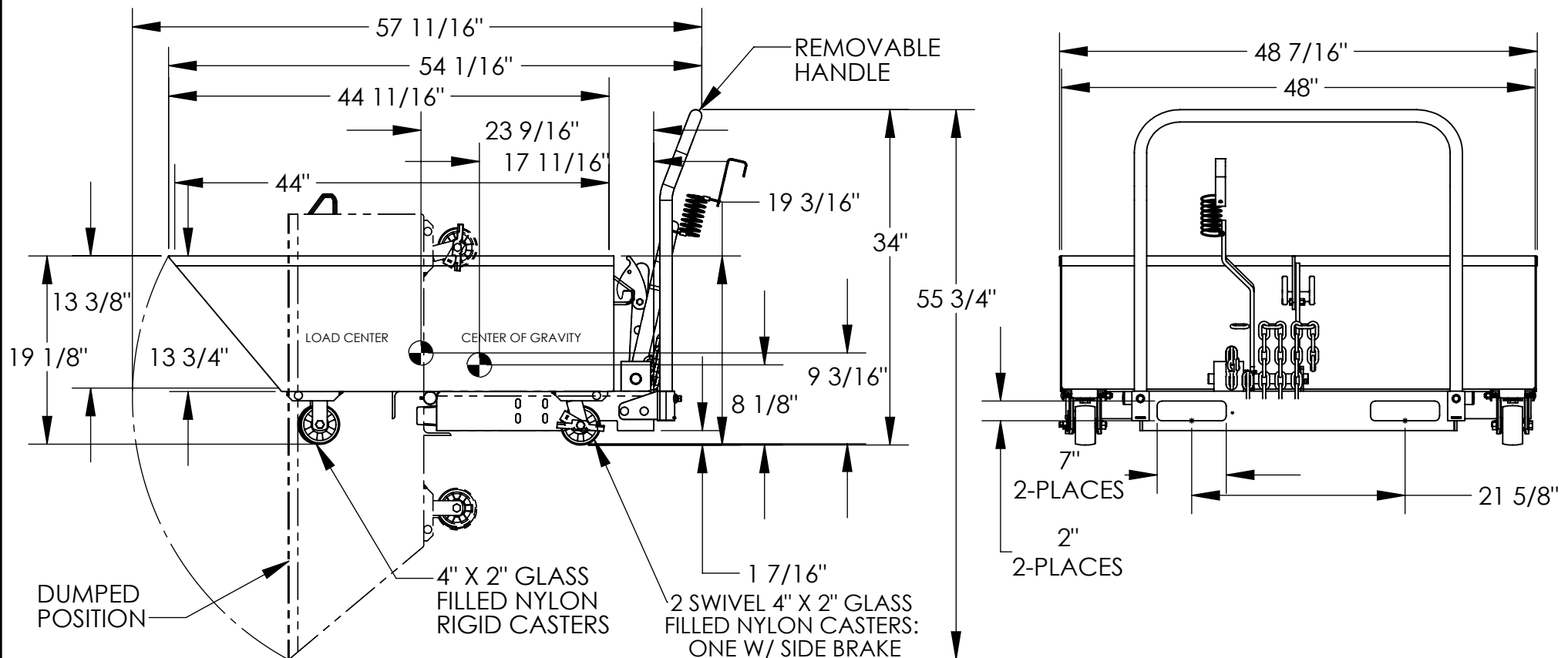


# LOW PROFILE PARTS HOPPER - SMS-46A-HHOP-LP



## STANDARD FEATURES

MODEL NUMBER: SMS-46A-HHOP-LP

CAPACITY: 2,000 LBS.

VOLUME: 1/2 CUBIC YARD

OVERALL WIDTH: 48 7/16"

OVERALL LENGTH: 54 1/16"

OVERALL HEIGHT: 34"

WORK ENVELOPE: 48 7/16" X 57 11/16" X 55 3/4"

CHUTE SIZE: 48 7/16" X 44 11/16" X 13 3/4"

RELEASE CABLE LENGTH: AT LEAST 48"

FORK POCKETS: 7"W X 2"H, 21 5/8" ON CENTER

1-SWIVEL 4" X2" GLASS FILLED NYLON CASTERS W/ LOCK

1- SWIVEL 4"X2" GLASS FILLED NYLON CASTER

2- RIGID 4"X2" GLASS FILLED NYLON CASTERS

TOUGH BAKED IN POWDER COATED BLUE FINISH

NEVER EXCEED LOAD CENTER RATING PER FORK TRUCK MANUFACTURER'S GUIDELINES. DO NOT USE THIS FORK TRUCK ATTACHMENT IF LOAD WILL EXCEED FORK TRUCK MANUFACTURER'S LOAD CENTER RATING.

**STOREMORESTORE**

[www.StoreMoreStore.com](http://www.StoreMoreStore.com) | 855-786-7667