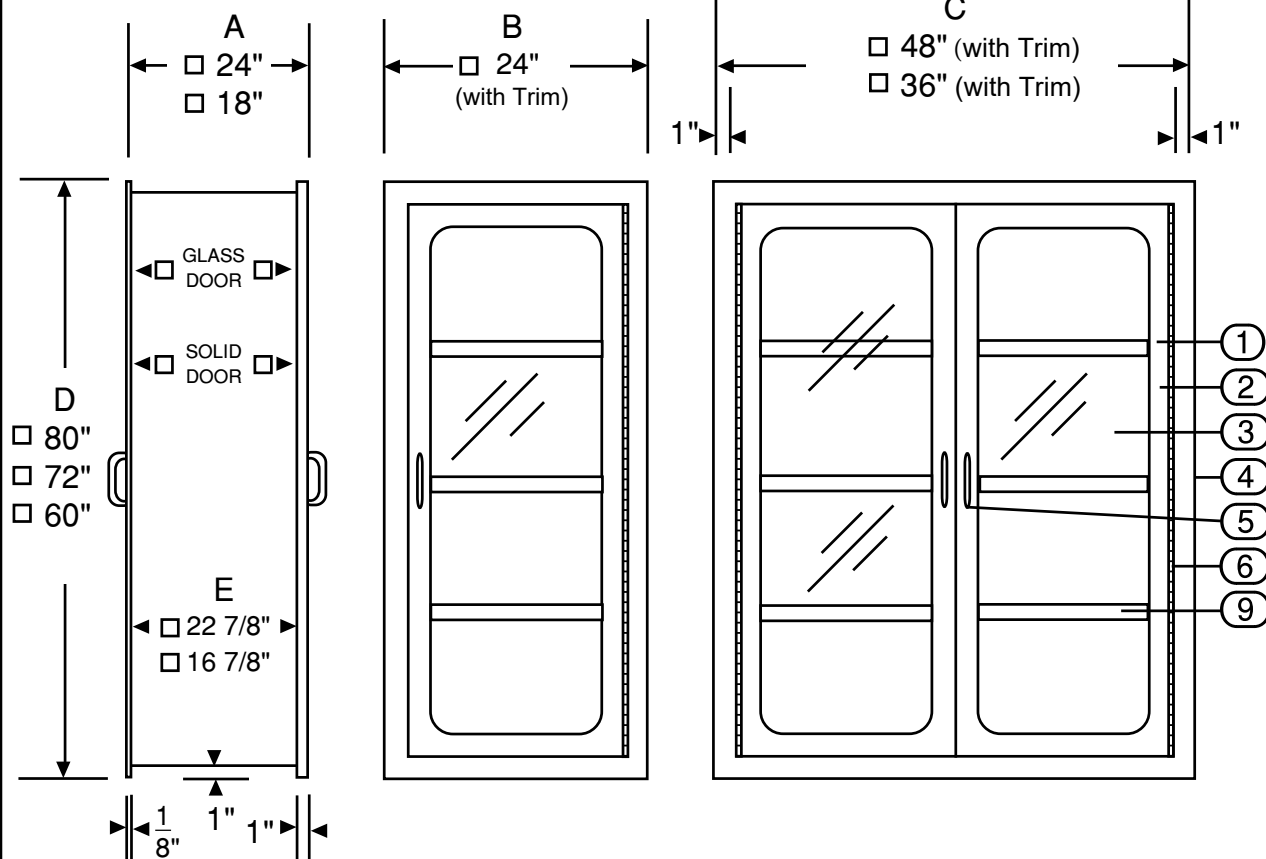


SURGICAL STORAGE CABINET PASS THROUGH

SCALE: NOT TO SCALE



- 1. DOOR, SOLID, DOUBLE WALL, SOUND INSULATED (IN BACK) .
 - 2. DOOR, SINGLE GLAZED, DOUBLE WALL, 2" WIDE FRAME.
 - 3. GLASS, DBL STRENGTH, TEMPERED, 1/4" THICK, REMOVABLE.
 - 4. STAINLESS, TYPE 304, # 4 FINISH.
 - 5. HANDLE, NYLON ROLLER DOOR CATCH, SPRING LOADED, NOT SHOWN.
 - 6. PIANO HINGE, FULL HEIGHT.
 - 7. RECESS FLANGE, SS, BUILT IN.
 - 8. RECESS FLANGE, SS, REMOVABLE.
 - 9. SHELF, HEIGHT ADJUSTABLE IN 1/2" INCREMENTS
- 80" HIGH CABINET 5 SHELVES. 72" HIGH CABINET 4 SHELVES. 60" HIGH CABINET 3 SHELVES. WALL OPENING:

WIDTH: TOTAL OF "B" OR "C"-1 1/2".
HEIGHT: "D" - 1 1/2".
WALL DEPTH: "E"

Optional Equipment: Optional interlocking door handles and silicone door gaskets to suppress air passage are available upon request.

STOREMORESTORE