

# Commercial Roller Shutters

SOUTHWESTSOLUTIONSGROUP

*We Make People & Space Work Better Together*

boutique



## SECURITY WITH VISIBILITY

RETAIL | OFFICE

[www.SouthwestSolutions.com](http://www.SouthwestSolutions.com) | 1-800-803-1083 | [info@southwestsolutions.com](mailto:info@southwestsolutions.com)

# SOLID PROTECTION

SOUTHWEST SOLUTIONS GROUP



- 3** PROTECT your merchandise after hours with visibility
- 2** SHIELD your valuable merchandise and glass from damage
- 1** SECURE your retail store from smash and grab theft



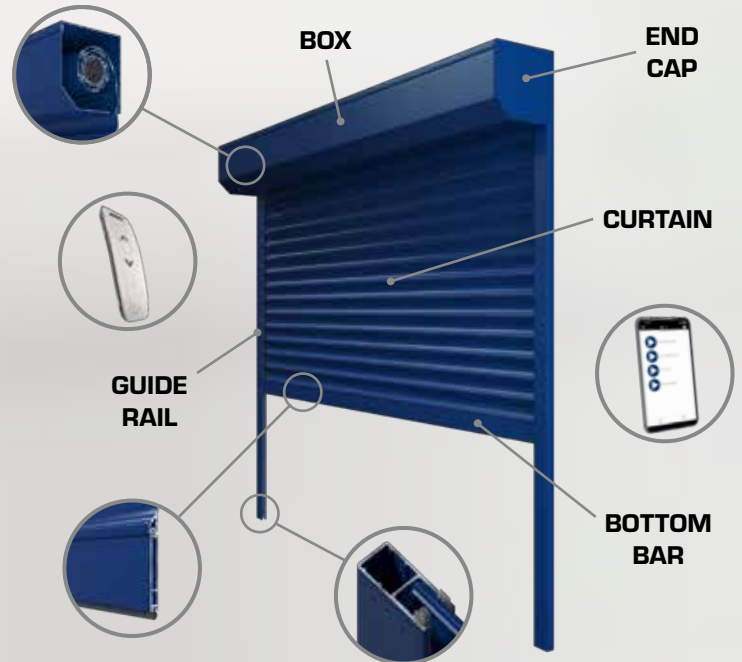
# SECURITY ROLLING SHUTTERS

## OPERATION

- Spring assist manual or powered operation options available
- Control effortlessly by switch, remote, WI-FI or app
- Smooth operation with low maintenance design
- Curtain rolls into a compact coil allowing a minimal size and sleek box design
- Multiple features ensure secured protection from vandalism and force

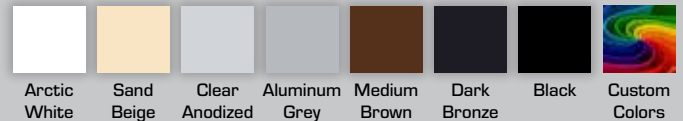
## MATERIALS

- Minimal size, high-tech roll formed aluminum housing
- Durable frame resists forced entry and daily wear
- Commercial grade aluminum - Environmentally friendly materials
- Multiple curtain strengths, designs, and colors available to exceed the requirements of any application
- High security that will enhance the aesthetics and function of your store or business premises
- Shutters provide additional energy savings during the winter and summer



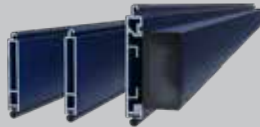
## FRAME & CURTAIN COLOR OPTIONS

- Not all series are available in all colors, contact your dealer for options
- Additional charge for dark bronze, black, and custom colors



## BOTTOM BAR OPTIONS

- 57 mm (2.25 in) or 60 mm (2.36 in) Standard Bottom Bars
- 75 mm (3 in) Heavy Duty Bottom Bar



## 1 SECURE

- Eliminate glass breakage, reducing on going maintenance costs
- Deters intruders, giving you absolute peace of mind after hours
- Make your business premises fully secure at the press of a button

## 2 SHIELD

- Effortlessly creates a secure barrier protecting your work environment
- Provides a durable shield from extreme weather conditions
- Can allow products to be displayed after hours for increased visibility

## 3 PROTECT

- Protect your business premises and products while stopping intruders
- Enjoy peace of mind by being able to 'lock and leave'
- Protects you from crimes of opportunity with visible security



## SHUTTER CURTAIN STYLES AND SIZING

Pentagon DefendaGuard curtain styles are finished in industry leading coatings, and provide options for visibility. Our engineered slats provide enhanced security as well as adding to the visual appeal of your facility.



SOLID CURTAIN							
Description	400*	440*	450	500	540	560	562
The solid curtain is available in the 400*, 440*, 450, 500, and 560 series. These series provide a highly secure barrier.	Roll formed aluminum with regular density foam filling	Roll formed aluminum with ultra hard resin core	Double wall extruded aluminum	Roll formed aluminum with regular density foam filling	Roll formed aluminum with ultra hard resin core	Roll formed aluminum with ultra hard resin core	Single wall extruded aluminum
* Available with light slots							

PERFORATED CURTAIN			
Description	561	562	
The perforated curtain is available in both the 561 and 562 series. This curtain allows light transfer through the shutter curtain as well as optimal air flow. The small perforations options is designed to provide an unobstructed view through the the shutter. The large perforations option gives you the look of a 'link and rod' grille door, with the advantage of having minimal moving parts.	Single wall extruded aluminum with small perforations	Single wall extruded aluminum with large perforations	

PATTERNED CURTAIN	
Description	530
The patterned curtain is available using the 530 series in DefendaGuard. Clear anodized connector rods are used in between each slat, adding valuable strength and visual appeal to the curtain. The curtain patterns we offer include clear, brick, straight, and window.	Clear polycarbonate / aluminum with curved design

BOTTOM BAR SIZING		
Description	STD Bottom Bar	HD Bottom Bar
The DefendaGuard system is compatible with the Standard Bottom Bar (two sizes) and the Heavy Duty Bottom Bar (one size). The Standard Bottom Bar is low profile and secure. The Heavy Duty Bottom Bar is extremely strong and durable.	2.25 in (57 mm) 2.36 in (60 mm)	3 in (75 mm)

GUIDE RAIL SIZING					
Description	53 mm	64 mm	66 mm	83 mm	83 mm - AnchorLoc
5 sizes of guide rails available in DefendaGuard. AnchorLoc secures the curtain to each guide rail.	2 in (53 mm)	2.5 in (64 mm)	2.6 in (66 mm)	3.25 in (83 mm)	3.25 in (83 mm)

SHUTTER AND CURTAIN SIZING				
Slat Profiles	Guide Rail Sizes	Bottom Bar Sizes	Maximum Curtain Size	Maximum Curtain Area
400, 440, 450	2 in (53 mm), 2.6 in (66 mm)	STD 2.25 in (57 mm), HD 3 in (75 mm)	Width: Up to 300 in (7620 mm) Height: Up to 228 in (5791 mm)	250 sq. ft (23 sq. m)
500, 530, 540, 560, 561, 562	2.5 in (64 mm), 3.25 in (83 mm)	STD 2.36 in (60 mm), HD 3 in (75 mm)	Width: Up to 300 in (7620 mm) Height: Up to 228 in (5791 mm)	250 sq. ft (23 sq. m)
530, 560, 561	3.25 in (83 mm) with AnchorLoc	STD 2.36 in (60 mm), HD 3 in (75 mm)	Width: Up to 300 in (7620 mm) Height: Up to 228 in (5791 mm)	250 sq. ft (23 sq. m)