

H i g h - D e n s i t y M o b i l e S t o r a g e

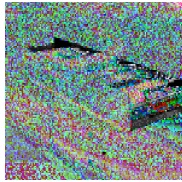
MANUAL SYSTEMS

S t o r a g e S o l v e d[®]

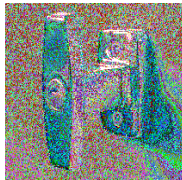
 Spacesaver[®]



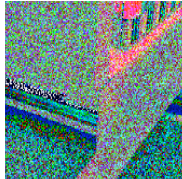
- **Wide Choice Of Housings** Almost any type of storage housing can be mounted on Spacesaver mobile carriages. A broad array of multi-media storage accessories are also available.



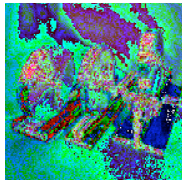
- **Waist-High System Locks** Easy-to-reach, waist-high locks provide basic security, limiting unauthorized user access to an individual aisle, a group of aisles, or if desired, the entire system.



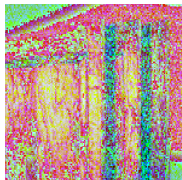
- **Recessed Carriage Design** Recessed mounting of shelving and cabinets enhances the structural rigidity of the system.



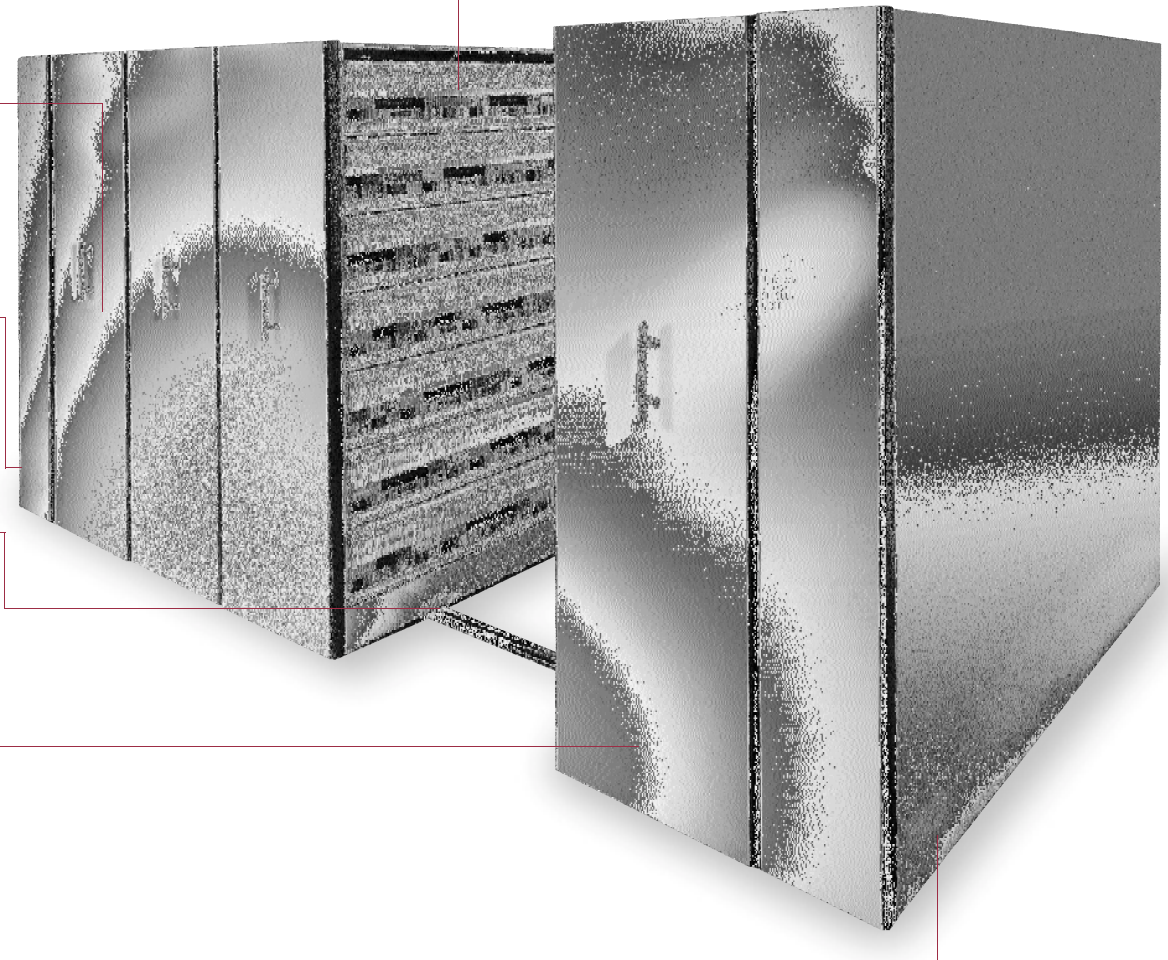
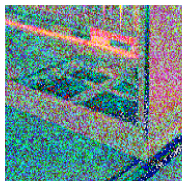
- **Multiple Guidance System Configurations** Spacesaver carriages come equipped with a variety of guidance system configurations. Relative to the application, our local Area Contractor will help you select the one designed to promote optimal system tracking.



- **Aesthetic Flexibility** Custom system end panels are available to create a look that is functional, aesthetically pleasing, and at the same time, one that directly complements the unique environment the project design team is striving to create.



- **Uniframe Carriage** Spacesaver's welded steel uniframe carriages are rigidly constructed, resisting system binding, racking and misalignment.



MOBILE CARRIAGE SYSTEMS

By mounting shelving units and storage cabinets on wheeled carriages that travel on rails, Spacesaver High-Density Mobile Storage Systems eliminate the need for multiple fixed aisles, freeing floor space for other more productive uses.

- **Standard Carriage Length** Spacesaver Manual System carriages are available in standard lengths up to 16 feet (4.8m). Greater carriage lengths are possible, depending on system load factors.
- **Load Carrying Capacity** Each Manual System carriage has a minimum load carrying capacity of 1,000 lb. (1,500 kg) per linear foot (meter). Your local Area Contractor can provide weight analysis and offer structural strategies to accommodate heavier system floor loads.
- **Flexible Rail Layout** By adjusting rail size, spacing and orientation, floor loads can be optimally distributed at practical bearing points.
- **Welded-Steel Uniframe Carriage** The welded-steel construction of Spacesaver carriages helps ensure that they will retain their alignment, eliminating binding, racking and misalignment of carriage and shelving. Their rigid, uniframe design has no exposed fasteners to loosen or break.
- **Hardened Steel Wheels And Rails** Carriage wheels and rails are fabricated out of hardened steel and precision-machined for maximum strength and system life.
- **One-Piece Structural Rail System** Available one-piece rail systems have no butt joints or welds. Their tongue-and-groove design restricts lateral movement and provides greater structural rigidity.
- **Fully-Grouted Rails** All rails are fully supported and grouted to evenly distribute system weight. They are not installed using shims, which can cause carriage rails to flex and the system to malfunction. Modular rail and floor systems are also available.
- **Flexible Guidance Systems** To reduce friction and facilitate smoother tracking, Spacesaver carriages are available with a variety of guidance systems. Your local Area Contractor will help you select the system best suited for your application.
- **Recessed Carriage/Welded Shelving Uprights** Spacesaver carriages are designed for maximum stability. Their welded steel uprights and recessed mounting of shelving and cabinets enhance the structural integrity of the system. Storage housings become an integral part of the carriage, ensuring that they won't shift position or lose their alignment.
- **Anti-Tip Protection** Built-in anti-tip devices can be engineered to comply with the requirements of all seismic zones, providing an extra measure of system stability and safety – even in areas prone to earthquakes.
- **Low Profile Rail Design** The low-profile design of Spacesaver rail systems is engineered to mount flush with the finished floor. To ensure a proper match with the rest of their environment, system decks and ramps can be covered with virtually any flooring material.
- **Controlled Access** Unauthorized access to any or all aisles can be prevented with optional security locks which allow individual carriages or the entire system to be key-locked in closed-aisle position as desired.
- **ADA Compliant** To accommodate the personal limitations of individual users, Spacesaver Manual System floors and ramps can be configured to comply with ADA accessibility requirements.



SHELVING AND CABINETS

- Wide Choice Of Housings Almost any type of storage housing can be mounted on Spacesaver mobile carriages, including your own existing shelving and cabinets.
- Unlimited Shelving Options/Storage Accessories Beyond basic cabinetry, Spacesaver offers you a large assortment of case-type, four-post and cantilever shelving options, as well as drawers, bins, trays, lateral files, doors, industrial rack shelving and a broad range of storage accessories. They can be designed to accommodate virtually anything you wish to store.
- Ability To Reconfigure/Expand System As your storage needs change, Spacesaver shelving and cabinets can typically be reconfigured or expanded to accommodate them.
- Heavy-Duty Shelving Construction For added strength, Spacesaver shelving and cabinets are fabricated using heavy-gauge, cold-rolled steel and extensively reinforced for increased rigidity, improving their ability to support greater shelf loads.
- Wide Array Of Design Options A wide range of colors, finishes and end-panel materials provides you with design options limited only by your imagination.
- Durable Paint Finishes Spacesaver's powder-coat paint finishes are extremely durable, exceeding the stringent scuff, scratch and chip requirements of the American Library Association.



SPACESAVER MANUAL SYSTEMS

A p p l i c a t i o n s

STORE VIRTUALLY ANYTHING, AND DO IT IN LESS FLOOR SPACE

In many applications, Spacesaver High-Density Mobile Storage Systems are three times more space-efficient than conventional filing and shelving at half the cost.

Regardless of their size, weight or shape, virtually any type and variety of materials can be stored using a Spacesaver High-Density Mobile Storage System. Not only that, they can be stored in less floor space, reducing your building lease and construction costs.



Spacesaver is the recognized leader in high-density mobile storage, with more installations than all other manufacturers combined. We have designed systems to fit almost every situation.

Spacesaver High-Density Mobile Storage Systems have been installed in offices, hospitals, banks, libraries, schools, museums, archives, factories, warehouses, laboratories, government agencies and military bases, as well as many other uniquely demanding environments.

Drawing on this vast experience, we provide each customer with a storage solution that is custom-configured to meet their specific needs. Having designed and installed more than 85,000 successful mobile systems for customers with a wide range of individual requirements, chances are we have already solved a storage problem similar to yours.

ASK US FOR A PROFESSIONAL ASSESSMENT OF YOUR STORAGE NEEDS

Spacesaver's team of experienced Area Contractors are proven problem solvers who can make an invaluable contribution to your planning process. For a qualified professional assessment of your storage needs, give us a call at 1-800-492-3434. There is no cost or obligation.



THE BOTTOM-LINE QUESTION

Why Spacesaver?

As our ISO 9001 certification would suggest, Spacesaver is dedicated to the highest standards of product quality. Equally important is our commitment to customer service, both before the sale and after.

Through our extensive network of local Area Contractors, Spacesaver provides a level of experience and competency that others simply do not. From architectural constraints and building codes to system design and floor-loading, we have the expertise to handle every issue and customer concern.

A storage solution that meets your unique criteria. Single-source turn-key project management. Certified system installation. Ongoing maintenance and support. Spacesaver sets a standard of professionalism, performance and responsiveness that is unmatched. We live up to our customer commitments and have the references to prove it.

You can rely on The Spacesaver Group.



USA

1450 Janesville Avenue
Fort Atkinson, Wisconsin
53538-2798 USA
Telephone 920/563-6362
Toll Free 800/492-3434
Fax 920/563-2702

Canada

266 King Street East
Toronto, Ontario M5A 4L5
Telephone 416/360-1022
Toll Free 800/544-3679
Fax 416/360-7290

Europe

Commonwealth House
148-153 High Holborn
London WC1V 6PJ, UK
Telephone +44 (0)20 7404-7441
Fax +44 (0)20 7404-7442
Email sales@kiuk.co.uk



website: www.spacesaver.com
email: ssc@spacesaver.com

Spacesaver Corporation is a division of KI.



© 2005 Spacesaver Corporation
All rights reserved.
REV. 1.0/SC-0126 SSC/PRI 1/05

KI and Spacesaver are
registered trademarks of
Krueger International, Inc.

